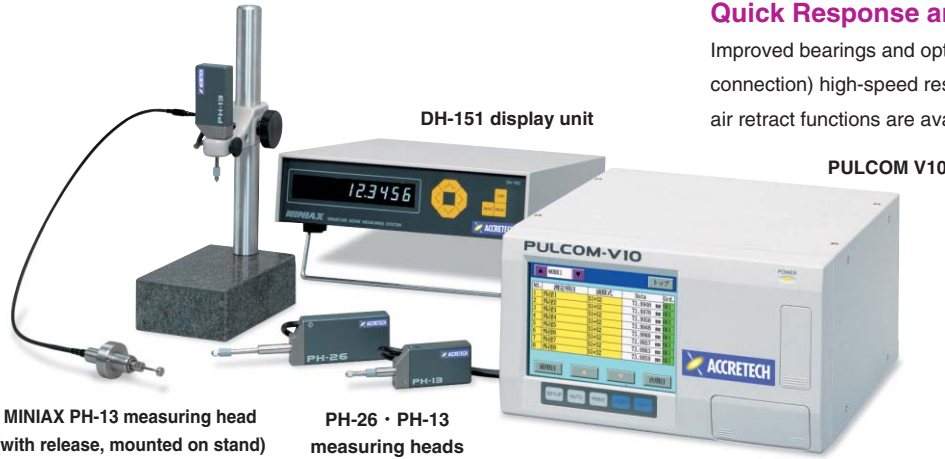


MINIAX >>>



Quick Response and High Rigidity

Improved bearings and optical system provide 1000 mm/second (V10 connection) high-speed response and high rigidity. In-line support and air retract functions are available as options.

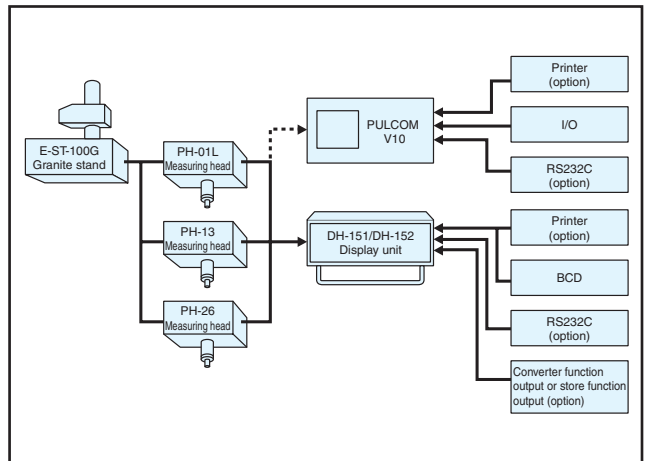
MINIAX PH-13 measuring head (with release, mounted on stand) PH-26 · PH-13 measuring heads

Powerful Application Software

This unit can be used in combination with the powerful application software used by the V10, which sets the standard for in-line measuring machines. As with past models, connection to the DH-151 display unit is also supported.

- Multi-point measuring system: Up to four MINIAX units can be connected (standard: 2) for a maximum of 32 different measurements (8 items can be displayed simultaneously).
- Workpiece change function (option): This option eliminates the need for frequent setup changes when measuring different types of workpieces.
- Dual language display: Japanese and English
- Judgment function: +NG、OK1-OKn、-NG (n=19 or less)
- Smoothing: Measured data stabilization can be set in 0.01-second units.
- RS-232C (option): For output of measurement data and judgment results.
- Store function (option): Peak-to-Peak、Max、Min
- SPS function (option): For use in combination of the PC card for data storage (CSV format)
- Print function (option): Enables printing of measurement results.

System Configuration



Specifications

Measuring Head Specifications

Model	PH-01L	PH-13	PH-26
Measuring range	10 mm	13 mm	26 mm
Measuring accuracy (at 20°C)	±0.3 μm	±0.3 μm	±0.4 μm
Measuring force	Downwards	0.1 N	0.35 - 1.15 N
	Sideways	-	0.20 - 0.95 N
	Upwards	-	0.05 - 0.75 N
Weight	75 g	Approx. 145 g	Approx. 195 g
Waterproof	IP50		
Functions (options)	Low measuring force dedicated type	Release can be provided	Release can be provided

Display Unit Specifications

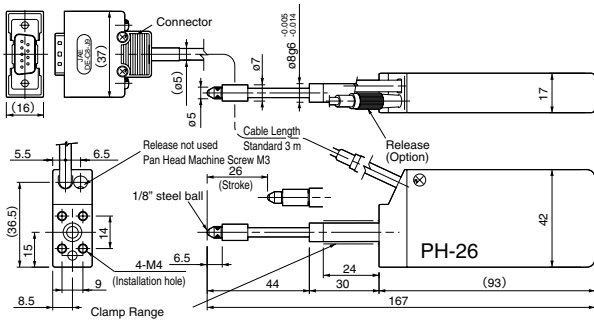
Model	DH-151	DH-152
Display	Blue fluorescent display tube, zero suppress	
Min. display value	0.0001 mm	0.00005 mm
Display range	±999.9999 mm	±999.99995 mm
Quantization error	1 count	
Response speed	500 mm/s	
Digital output	C-MOS IC level (74HC series) Positive logic BCD/Binary parallel, Fan-out 10 (74LS type)	
External operation	Zero set, preset, display/output latch	
Functions	Zero set, preset, attribute direction changeover, brightness adjustment, speed check, self diagnosis	
Usage temperature range	0°C - 40°C (Storage temperature: -20°C - 70°C)	
Power source	AC 85V - 250V, 50/60 Hz, Approx. 10VA	
Weight	Approx. 2.7 kg	

PULCOM V10 Application Specifications

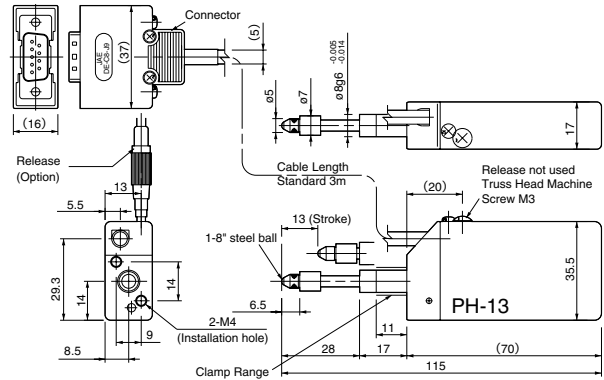
Model	E-PV10
Display	6.4 inch TFT color liquid crystal display
Display items	Measured results, list of items (meter can be displayed during in-process use)
Display range	±999.9999 mm
Min. display value	0.1 μm, 0.2 μm, 0.5 μm, 1 μm
Display unit	Select: μm, mm or inches
No. of detectors	Standard: 2 (Max. 4)
Measured items	Max. 32
Input methods	Touch panel / key sheet
Judgment output	1 I/O circuit board provided as standard feature. Up to 3 I/O circuit boards can be added when this is insufficient.
Magnification calibration	Key input
Sampling speed	1000 mm/s
RS-232C	Standard
Printer output	Standard
Program conversion	Key operation after PC card is inserted
Outer dimensions (W × D × H)	287 × 328 × 159 mm

- The DH-151 supports connection of the E-PR-1000 statistic printer only. Connection of commercially available printers is not supported.
Product codes Statistic Printer E-PR-1000 : 0939130
Statistic Printer Connection Cable: 0939139

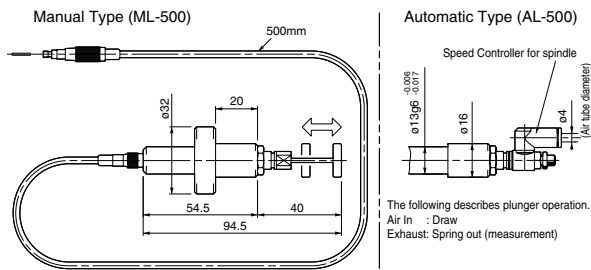
Outer Appearance/Dimension Diagram



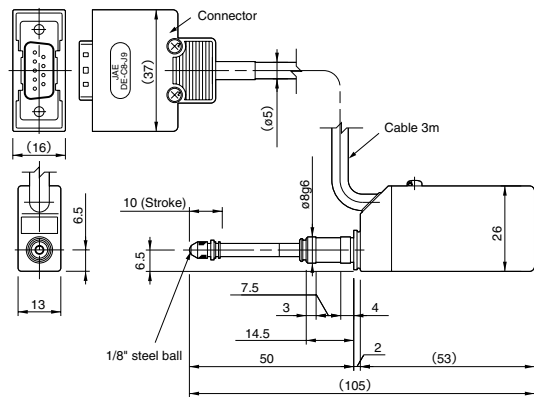
Measuring Heads PH-26 (Product Code: 4205820)



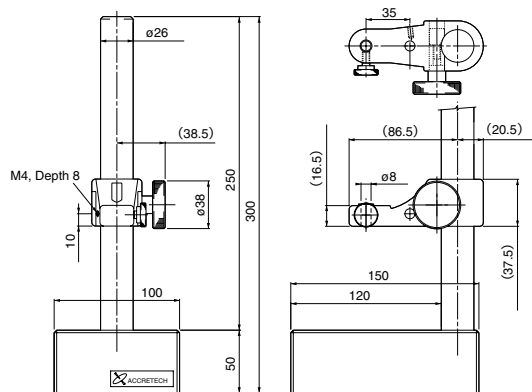
Measuring Heads PH-13 (Product Code: 4205819)



Release for PH-13, 26 (Product Code: 4300539)



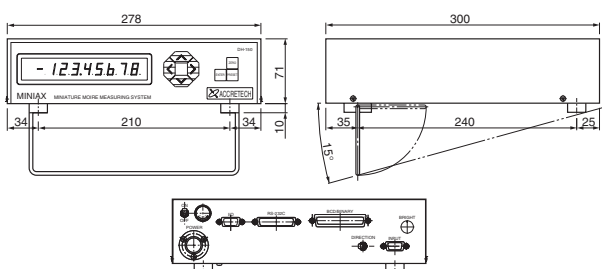
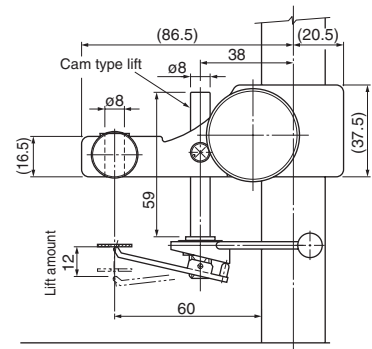
Measuring Heads PH-01L (Product Code: 0903005)



Stone top stand: E-ST-100G (Product Code: 0997930)

PH-01L does not support release connection.

Comes with cam type lift for stand use.



Display Unit DH-151/152 (Product Code: 0903070/0903080)

See the separate pages for PULCOM V10 dimension diagrams. Use of the V10 requires addition of a 2-channel counter board.



V10

Product Codes PULCOM V10: 0930010
2-Channel Counter Board: 4205567